

DNA1346Z4WV

IP 4 x 2MP MultiSensor

D/N IR Vandal Dome

Analytics



DESCRIPTION

The DNA1346Z4WV Series are 1/2.8" Starvis CMOS, multi-sensor 4x2MP Network IP Day/Night IR Domes Vandal units are designed with high quality dual Encoders H.265/H.264 video compression and configurable dual stream outputs at 25/30fps 2MP (1980x1020). Other Resolutions are available providing outstanding quality images under Starlight low illumination – 0.005Lux/F1.8/0Lux/ 8 IR LED on - 30m night vision. Features include ICR, 3DNR, AGC, BLC, ultra WDR (140dB), Audio in/out, RS-485 port Alarm in/Relay out, SD card and built-in analytics. Configured with DC Auto Iris 2.7-13.5mm motorized zoom lens, Smart Phone Interface, ONVIF, impact protection IK10 and IP67. With 24VAC/POE, the DNA1346Z4WV Series multi-sensor 4 x 2MP Day/Night Network IR Vandal Domes are ideal solutions for demanding commercial, industrial and Mobile IP video surveillance installations.

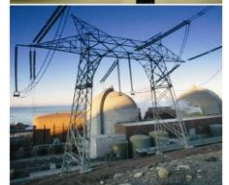
FEATURES

- * Network, Multi Sensor 4 x 2.0MP, 1920x1080, D/N IR Vandal Domes with ultra WDR (120dB)
- * 1/2.8" Starvis CMOS Progressive Scan Sensor
- * Illumination Starlight Color 0.005Lux/0Lux/IR on
- * H.265/H.264 Dual Stream configurable
- * Highest Rated Video Compression and DSP
- * Supports 25/30fps 2MP 1920x1080 Resolution
- * Built-in Analytics: Tripwire, Perimeter Protection, Loitering, Abandoned Objects, Missing Objects
- * Face Detection, Scene Change, Camera Tamper
- * Designed with 2.7-13.5 Motorized zoom Lens
- * Built-in 8 IR LEDs for Night Vision – 30 meters
- * Variable Bit Rate and Constant Bit Rate
- * Supports RTP/RTSP Unicast/Multicast
- * 1 Audio In/1 out; RS-485 port, Alarm In/Out
- * 10/100Mbps Ethernet Compatible RJ-45 Port
- * Smart Phone Interface: iPhone and Android
- * Vandal Impact Protection Rating IK10
- * Available with Voltage 24VAC and POE
- * Ethernet, Surge Protection; SD Card (128GB)
- * Compliance with CE, FCC, ROHS, ONVIF, IP67



APPLICATIONS

- * Homeland Security
- * Correctional Centers
- * Petrochemical Industry
- * Corporate and Banking
- * Casinos and Hospitality
- * Health Care Centers
- * Schools and Universities
- * Government and Military
- * Power Generating Plants
- * Traffic Surveillance (ITS)



ORDERING INFORMATION

DNA1346AZ4W-64V Network 4 x 2.0 MP, D/N IR Vandal Dome, 30m night vision, 4x2.7-13.5mm Motorized zoom Lenses, Audio, RS-485, Alarms, IK10, IP67, NTSC, 24VAC/POE

DNA1346BZ4W-64V Network 4 x 2.0 MP, D/N IR Vandal Dome, 30m night vision, 4x2.7-13.5mm Motorized zoom Lenses, Audio, RS-485, Alarms, IK10, IP67, PAL, 24VAC/POE



DNA1346Z4WV

IP 4 x 2MP MultiSensor

D/N IR Vandal Dome

Analytics



DNA1346Z4WV	Product Specifications
Image Sensor:	4 x 2MP 1/2.8" Starvis CMOS Progressive Scan Image Sensor with WDR
Effective Pixels:	1920(H)×1080(V)
Minimum Illumination:	Color 0.005LUX/F1.8 / 0Lux(IR ON)
S/N Ratio:	> 50 dB
Ultra Dynamic Range:	Ultra WDR 140dB
Lens /IR Night Vision:	2.7-13.5mm motorized zoom lens / 30 meters IR LED ON
Encoders / Compression:	Dual Codecs H.264/H.265, Dual Stream, Configurable
Video Resolution:	4 x 2MP (1920 x 1080), other sub streams
Video Frame Rate:	25/30 fps @2MP, 1080p, 720p
Audio Function:	Audio Input / Audio Output
Audio Rate/ Compress.:	64kbps/128kbps; G.711 / PCM
Additional Features:	ICR, WB, 3DNR, AGC, BLC, true WDR
Network Interface:	10/100 Mbps RJ-45 Port
Network Protocol:	HTTP, TCP/IP, ARP, IGMP, ICMP, RTSP, RTP, UDP, RTCP, SMTP, FTP, DHCP, DNS, DDNS, PPPOE, UPNP, NTP, SNMP
Smart Phone/Appliance:	iPhone, iPad, Android, Windows
Web Server:	Intuitive Browser Interface
Built-in Analytics:	Tripwire - Motion Detection with alarm recording, Cross Warning Zone, Perimeter protection, loitering, abandoned objects, missing objects detection, face detection, scene detection, tamper detection, camera tamper warning message
CPU Requirement/OS:	Intel Core i7 2.4GHz/Embedded Linux OS with DNA3800, DNA4000 and DNA5000 NVR
Data:	RS-485 Port
Alarm Functions:	1 Alarm In / 1 Alarm Out
Micro SD Card Slot:	Supports Local Recording - max 128GB
Power Supply:	24VAC - 24W (IR LED ON); Power over Ethernet
Operating Temperature:	14°F ~ 140°F (-10°C ~ 60°C)
Operating Humidity:	0-95% non-condensing
Dimensions Dia x H:	11.26"(286mm) X 4.38"(111.3)
Weight:	6.2 lbs. (2.75Kg)
Materials:	Metal, IK10
Regulatory Compliance:	CE, FCC, ROHS, ONVIF, IP67
Manufactured to:	ISO9001:2000 Standards

